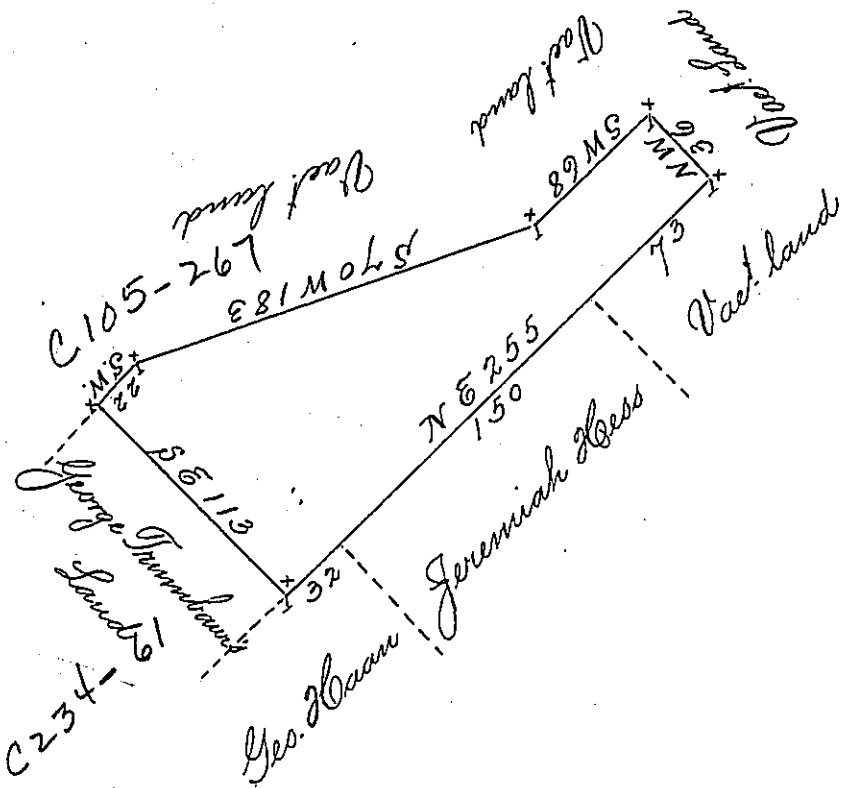


36	149
113	74 1/2
108	
396	



73	74.5	113
36	160	22
438		226
219		226
2629		2486
2486		
5115	32	
3	74	

By Virtue of a Warrant from the Proprietaries dated the Twenty Sixth day of October 1734 Surveyed unto Peter Bernard a Tract of Land Situate in Frederick Township in the County of Philad^a Beginning at a post in a line of George Haan's land thence by the same North East thirty two perches and by land of Jeremiah Ness one hundred & fifty perches & by Vacant Land Seventy three perches to a post thence by Vacant Land North West thirty six perches to a post thence by Vacant Land South West Sixty Eight perches to a post thence by Vacant land South seventy Degrees one hundred Eighty three perches to a post thence by Vacant land South West twenty two perches to a post a Corner of George Trumbauer's land thence by the same South East one hundred and thirteen perches to the place of Beginning Containing one hundred and one hundred and one acres with the usual allowance of Six p. Cent
 Surveyed Novem^r 17 1734

By Nich^s Seull

IN TESTIMONY that the above is a copy of the original remaining on file in the Department of Internal Affairs of Pennsylvania, made conformably to an Act of Assembly approved the 16th day of February, 1833, I have hereunto set my Hand and caused the Seal of said Department to be affixed at Harrisburg, this Seventh day of January 1902.

James Latta
 Secretary of Internal Affairs.